

Domestic Violence in Baltimore County



BALTIMORE COUNTY
MARYLAND



2007 Annual Report

Table of Contents

- I. Introduction**
- II. Domestic Violence Coordinating Council Overview**
- III. Baltimore County’s Coordinated Effort to Address Domestic Violence**
 - A. Police Department
 - B. State’s Attorney’s Office
 - C. Court System
 - D. Sheriff’s Office
 - E. Department of Social Services
 - 1. Sexual Assault Domestic Violence Hotline
 - 2. Court Advocate Program
 - 3. Domestic Violence Referral Program
 - F. Domestic Violence Community Resources
 - 1. Service Providers
 - a. Adelante Familia
 - b. Family & Children Services
 - c. Family Crisis Center
 - d. House of Ruth
 - e. TurnAround
 - 2. Hospital Based Intervention
- IV. Domestic Violence Referral Programs**
- V. Highlights**
- VI. State Legislative Initiatives**
- VII. Current Domestic Violence Coordinating Council Projects**
- VIII. Key Organizations**

Dear Friends and Colleagues,

It is with great pride that the members of the Baltimore County Domestic Violence Coordinating Council (DVCC) bring you the second annual report on Domestic Violence in Baltimore County. Once again, this report presents an overview of the coordinated response that public and private agencies provide to address domestic violence in our community, data about the local incidence of violence between intimate partners, and an update on new initiatives being implemented to protect domestic violence victims and to hold offenders responsible for their behavior. Our continued efforts to stop domestic violence in our community include:

- Piloting the lethality assessment tool in Dundalk
- Developing new strategies to reach victims of domestic violence
- Convening the Domestic Violence Fatality Review Team
- Implementing a partnership between the Baltimore County Service Providers, and the Departments of Police and Social Services to conduct home visits to identified victims of domestic violence to provide information and community resources
- Hosting of Baltimore County's First Annual Domestic Violence Conference

One of the challenges in quantifying homicide and suicide related domestic violence fatalities is the question of who is counted? Do we only count the victim; do we count family or friends that may be killed in the commission of a domestic violence homicide; do we count the innocent bystanders that may be caught in the crossfire? How do we count "near fatalities" and how do we count victims who commit suicide as a result of the violent and abusive relationship they are in? These are difficult questions for our community to consider but important factors in creating a clear and accurate picture of the incidence and impact of domestic violence on our community.

Of this we can be sure. In Baltimore County in 2006 there were 11,814 domestic related police calls for service. 1,073 suspects were arrested on the scene. Our collaborative and effective response to these calls is making a difference in Baltimore County. Together we will continue our efforts to end domestic violence in our community.

Marci Van De Mark

Assistant Director
Baltimore County Department
of Social Services

Karen Keyser

Domestic Violence Coordinator
Baltimore County Department
of Social Services

INTRODUCTION

Domestic Violence Coordinating Committee

Rosalyn Branson
Executive Director
TurnAround, Inc

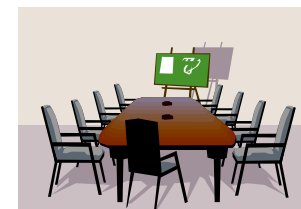
Lisa Knickmeyer
Director
Adelante Familia

Douglas Murphy
Executive/Clinical Director
Family Crisis Center

Patricia Thompson
District Director
Family & Children Services

Karen Keyser
Domestic Violence Coordinator
Baltimore County Department
of Social Services

Marci Van De Mark
Assistant Director
Baltimore County
Department of Social Services



Domestic Violence Coordinating Council Overview

In 1986, Baltimore County was one of four jurisdictions nationwide to receive funding from the Department of Justice to initiate a coordinating council. This council is now celebrating twenty-one years of commitment to:

- Increase awareness of Domestic Violence
- Increase partnerships within County agencies and private non-profit agencies
- Identify areas to concentrate efforts to help victims

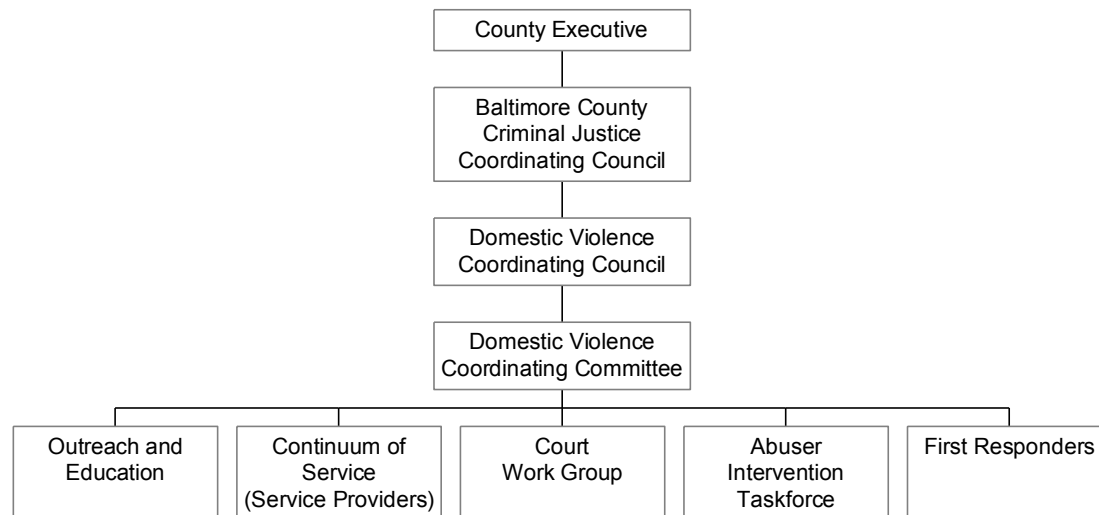
In 2005, the Domestic Violence Coordinating Council was established as a Committee of the Baltimore County Criminal Justice Coordinating Council (CJCC). Created by the Baltimore County Executive, the mandate for the CJCC is to:

- Study the Baltimore County juvenile and criminal justice systems, identify deficiencies, and formulate policy, plans and programs for improvement
- Communicate and present planning, financial, operational, managerial and programmatic recommendations to the agencies represented on the Council
- Provide the coordinated leadership necessary to establish cohesive criminal justice strategies, policies and programs
- Collaborate to maximize resources and raise funds to support criminal justice programs

The Domestic Violence Coordinating Council works to assist the CJCC in accomplishing this mandate with respect to the particular area of domestic violence. The DVCC's primary goals are to:

- Identify gaps in service delivery
- Coordinate services/resources directly to those who need assistance
- Monitor the Criminal Justice system's response to Domestic Violence
- Develop a mechanism to ensure offenders comply with court ordered treatment
- Identify and recommend "best practices" to most effectively reach victims and provide services

Baltimore County Criminal Justice Coordinating Council



Domestic Violence Coordinating Committee Overview

The Domestic Violence Coordinating Council has 5 sub-committees staffed by volunteers that meet bi-monthly. Annually each sub-committee identifies goals that become the focus of their work. We are pleased to report on the accomplishments of each sub-committee.

Outreach and Education Sub-Committee

- In an effort to educate the community the Outreach and Education Sub-Committee hosted the First Annual Domestic Violence Conference held on September 28, 2007. This conference focused on identifying the indicators of abuse and provided resources for the community to access.
- Providing workshops and training to diverse community groups is an important component of the work of this subcommittee. Among the many successful presentations, the Presidents of all of the Women's Clubs in Baltimore County selected domestic violence as their initiative for the year.

- The resource information on the “Get Help” card was revised and updated. This card provides valuable information to victims and others. It is distributed throughout Baltimore County to hospitals, day care centers, police precincts, and libraries, supporting easy access for domestic violence victims.
- In partnership with the Family Violence Unit, 24 student Resource Officers were trained on Date Violence Prevention. This two-day training is designed to prepare the Student Resource Officers in addressing date violence with students in Baltimore County Middle and High Schools. A pilot program is being implemented in two Baltimore County Schools this year.
- In the planning is a media campaign to publicize the Domestic Violence/Sexual Assault Hotline becoming bilingual.

Court Work Sub-Committee

- Important to the successful engagement of domestic violence victims is conducting an effective home visit. The Court Advocates and agency based advocates have partnered this year to visit homes where domestic violence is prevalent, but no criminal charges have been filed. 1,838 joint home visits were conducted with Police Domestic Violence Coordinators.
- The committee designed and surveyed victims seeking interim orders to better understand their experience identify strategies to strengthen this process, hopefully creating a more user friendly process.
- Newly created is an ex-parte brochure to be distributed to victims.

Continuum of Service: Service Provider Sub-Committee

- This committee expanded to include vital resources in Baltimore County with the addition of Adelante Familia. This partnership will support outreach to the Hispanic community.
- Written protocols on the Hotline and Abuser Intervention programs were adopted as part of our continuing quality improvement efforts to ensure consistency in service delivery and strengthen our response to victims.

First Responders Sub-Committee

- This Committee developed and distributed a questionnaire to local hospitals to identify initiatives in place and gaps in service.
- During 2006, the Maryland Health Care Coalition against Domestic Violence sponsored a statewide conference on creating hospital-based programs. Since then, the First Responders Subcommittee of the Domestic Violence Coordinating Council (DVCC), the Maryland Health Care Coalition Against Domestic Violence, Northwest Hospital's Domestic Violence Program and TurnAround, Inc. have been working with the local Baltimore Metropolitan area hospitals to better address the needs of domestic violence victims. (St. Agnes, Greater Baltimore Medical Center (GBMC), St. Joseph's Hospital, Franklin Square Hospital, Bayview Medical Center).

Abuser Intervention Sub- Committee

- This Committee created partner contact protocols to be implemented in the upcoming year.
- Guidelines for implementing effective and consistent abuser intervention groups were developed and implemented.

BALTIMORE COUNTY'S COORDINATED EFFORT TO ADDRESS DOMESTIC VIOLENCE



A. Baltimore County Police Department

The Baltimore County Police Department was established in 1874 to better protect the persons and property of Baltimore County. To that end the Baltimore County Police Department will strive to reduce the level of domestic violence by improving victim services, conducting thorough investigations, and promoting safe domestic environments. Beginning in 1999 the Baltimore County Police Department, through its strategic planning process, developed a plan to improve the management of domestic violence cases. In 2000, federal grant funding enabled the Department to train and assign patrol officers to serve as precinct-level Domestic Violence Coordinators (DVCs). By the end of 2006 each of the police department's ten precincts have a Domestic Violence Coordinator dedicated to domestic violence incidents. The Department also has one Hispanic liaison/domestic violence coordinator position assigned to the Youth and Community Resources Section.

It is the policy of the Baltimore County Police Department to provide the highest possible level of service to the citizens of Baltimore County. In this regard, we will continue to build partnerships with other agencies and service providers to offer a strong continuum of service to victims of domestic violence and enhance the prosecution of offenders. Each Domestic Violence Coordinator shall strive to:

- Significantly reduce the levels of domestic violence in Baltimore County
- Ensure a consistent response to all victims and reporting of situations
- Provide a safe, problem-solving response to domestic situations
- Increase awareness and knowledge of domestic violence

According to the 2006 Annual Report the Baltimore County Police Department responded to 599,818 calls for service of which 11,814 were domestic related. Of these 11,814 domestic related calls for service responding officers arrested 1,073 suspects at the scene. Also, during 2006 1,838 victims of domestic violence were referred by our Domestic Violence Coordinators to our service provider partners, the Department of Social Services and other Domestic Violence Program staff from private non-profit agencies, for additional follow-up services.



**Domestic Related Police Reports by Precinct
(Calendar Year)**

Year	Wilkins 01	Woodlawn 02	Franklin 03	Pikesville 04	Towson 06	Cockeysville 07	Parkville 08	White Marsh 09	Essex 11	North Point 12	Total
2004	1,024	1,745	1,536	*	740	562	750	1,030	1,932	2,221	11,540
2005	945	1,719	1,370	*	733	499	728	1,022	1,608	2,288	10,912
2006	887	2,009	790	825	634	607	814	1,059	1,746	2,448	11,819
2007	Pending										

* Precinct 4 opened in 2006

**Data provided by Baltimore County Police Department
Crime Analysis Section**

**Domestic Violence Related Homicides
(Calendar Year)**

	2004	2005	2006	2007
Baltimore County	6	7	4	Pending

**Domestic Violence Related Suicides
(Calendar Year)**

	2004	2005	2006	2007
Baltimore County	2	0	2	Pending



B. State's Attorney's Office

The Baltimore County State's Attorney's Office Domestic Violence Unit was established by Sandra O'Connor in 1993. The unit utilizes evidence based prosecution techniques and works to hold abusers accountable; helps ensure the safety of victims, and acts to interrupt the cycle of domestic violence.

This unit has provided leadership in the implementation of numerous initiatives and strategies in the investigation and prosecution of domestic violence cases. Efforts are made to contact all of the victims of domestic violence crimes in the early part of the judicial process to help establish their confidence in the system. An open line of communication is maintained through the trial date to ensure the continued cooperation and safety of the victim.

The State's Attorney's Office provides ongoing in-service training for the Baltimore County Police Department, as well as specialized training in domestic violence investigation to all Baltimore County Police Academy recruits. This coordinated effort between the police and prosecutors has resulted in an effective partnership in the battle against domestic violence crimes.

Under the leadership of newly elected State's Attorney, Scott D. Shellenberger, the judicial intervention necessary to break the cycle of domestic violence will remain a high priority. Under the direction of the State's Attorney's Office, training opportunities addressing the issue of non-fatal strangulation assaults will be offered to police, prosecutors, emergency medical personnel, commissioners and the bench.

C. Court System

Baltimore County Circuit and District Courts

Baltimore County has three District Courts and one Circuit Court with 16 courtrooms. The District Courts are located in Towson, Catonsville and Essex. The Circuit Court building is centrally located in Towson, Maryland. Cases of domestic violence are heard in both District and Circuit Courts.

Circuit Court hears civil cases including divorce, custody and Protective Order cases. Under some circumstances, criminal cases are also heard. The District Court hears criminal cases and also civil cases. Both Circuit and District Courts issue Protective Orders.

Protective Order cases are a two-step process in District Court. (With the exception of Protective Orders that originate at the interim stage in front of a court commissioner. These are a three-step process). First the victim files a Petition for protection from abuse. The Judge then conducts an ex-parte hearing and determines whether an order meets the necessary criteria for granting. If it does, the Judge grants the petitioner a temporary order that provides protection from the violence. A Protective Order hearing is scheduled five business days later. This is the second step of the process. At the Protective Order hearing, the Judge makes a determination, based on the evidence presented, whether a Protective Order can be granted. If the order is granted, protection may be continued through one year and can be extended for an additional six (6) month period of time.

The Circuit Court is the only Court in the State that has power to hear jury trials. Often Domestic Violence Cases that are heard at the Circuit Court are jury trials. Additionally, the Circuit Court has a Family Services Support Division to help families and make appropriate referrals.

**Domestic Violence and Peace Order Dispositions
in the
Baltimore County District Court of Maryland**



**Domestic Violence Protective Order Dispositions
In the
Baltimore County Circuit Court of Maryland**

Baltimore County	Domestic Violence					
	Cases Filed	Transfers to Circuit Court	Interim Orders Granted	Ex Parte Orders Granted	Protective Orders Granted	Appeal
2003	3,620	23	578	2,095	994	66
2004	3,972	10	1,201	1,888	890	43
2005	3,780	7	1,065	1,838	871	52
2006	5,482	8	1,418	3,081	846	52

**** data collected from the Annual Report of Maryland Judiciary 2005-2006**



Baltimore County	Domestic Violence Cases Heard				Criminal Filings and Terminations	
	Temporary Protective Orders		Final Protective Orders		Combined Original & Reopened Cases	
	Hearings	Orders Granted	Hearings	Orders Granted	Filings	Terminations
2003	477	299	318	185	6,606	6,340
2004	426	273	281	160	6,334	6,363
2005	505	310	339	155	6,599	6,721
2006	847	497	640	270	8,274	6,298

D. Sheriff's Office

There are 71 Deputies in the Baltimore County Sheriff's Office. The Sheriff's Office is charged with the responsibility of serving domestic violence respondents with a copy of their protective order. When an ex-parte/protective order is obtained in Circuit Court, the clerk delivers the order to the Sheriff's Department and the Deputy on duty reviews the order, and interviews the petitioner to gather information on how best to serve the order on the respondent considering:

- Location of home
- Address of work
- Physical description of respondent
- License plate number of the respondent's vehicle

Every attempt is made to be timely in serving the order. To ensure the victim's safety, the protective order information is recorded prior to serving the order by the Sheriff's office. Updated information is entered after service is made, or not, allowing other appropriate Law Enforcement agencies access to the status of these protective orders and ex-parte orders. There was a slight increase in the number of protective orders served by the Sheriff's Department.



**Protective Orders Served
By
Baltimore County Sheriff's Department**

2005	492
2006	507
2007	510



E. The Department of Social Services (DSS)

Established in 1932, the Baltimore County Department of Social Services (BCoDSS) is a public social services agency that is mandated by the State to provide protective services for children and vulnerable adults. The Department provides family and children’s services, foster care and adoption services, adult and adolescent services and includes the Housing Office, which operates the Section 8 housing program. It also administers state and federal welfare programs.

The Family Violence Unit is a criminal justice sub-agency, which operates within the BCoDSS. The Family Violence Unit was established in 1983 as part of the Criminal Justice Coordinator’s Office and was transferred to the BCoDSS in 1993. During the decade between 1983 and 1993, the Family Violence unit developed victim support services including a 24-hour crisis hotline, victim court advocates, and case monitors who refer and track violators who have been court ordered to engage in batterer’s treatment. This unit provides domestic violence coordination and liaison among the private, non-profit treatment agencies and the criminal justice agencies in Baltimore County. The goal of the Family Violence Unit is “to improve the response to victims of domestic violence and sexual assault in Baltimore County”:

- **24-hour Domestic Violence Hotline/Sexual Assault Crisis Hotline** – Provides 24-hour response to victims and secondary victims with information about services and sources of immediate help in crisis situations. The Hotline operates 24 hours 365 days a year and is staffed by 30 to 34 volunteers. The Hotline Coordinator recruits, trains and supports the volunteers and supervises the Hotline Manager, who is responsible for day-to-day scheduling.

Domestic Violence Hotline

Year	2004	2005	2006	2007
Total Calls	6,855	5,624	5,984	6,086
Domestic Violence	1,400	1,282	1,271	1,336
Shelter	797	713	666	694
Child Abuse	58	57	42	65
Rape	217	202	261	197
Referrals & Requests for Information	4,680	4,195	4,199	4,040

- **Court Advocate Program** – Contacts all victims whose abusers are scheduled for trial. Without providing legal advice, the Advocates explain different remedies and protections, while alerting victims to the variety of possible outcomes. They also make referrals to services and explain the resources that are available to help victims. At the trial the Court Advocates accompany victims who want their support.
- **Court Referral Program** – Interviews and refers defendants who are court-ordered to receive batterer’s treatment. The Case Monitor, who arranges the referral, also follows-up to assure that all court orders are honored. If a defendant does not complete the treatment program as ordered, the Case Monitor returns the case to the court.

F. Domestic Violence Community Providers

Adelante Familia



The goals of Adelante Familia (a bilingual program of St. Vincent de Paul) are to eliminate the incidence of violence, reduce tolerance to violence, promote healthy families, and prevent another generation of victims and abusers. Adelante Familia accomplishes this by providing culturally competent and linguistically specific domestic violence prevention and crisis intervention services to Latino immigrant families. This includes victim support services such as crisis counseling, resource referral, legal advocacy & accompaniment, general support services, women support groups, educational workshops, financial assistance, food assistance, SafeNights as well as a 40-week abuser intervention treatment program. Adelante Familia offers comprehensive, community-based and women-centered advocacy services that recognize the "family" as a central value.

Adelante Familia	2005	2006	2007
Victims receiving support & advocacy services	122	134	226
Victims participating in support groups	45	81	115



Family & Children's Services

Family and Children's Services of Central Maryland (F&CS) has been dedicated to providing our communities with a full range of family support services for nearly 150 years. These services address single parent issues, relationship disruption, parent-child issues, teen pregnancy prevention, teen-parent issues, family violence, and child sexual abuse and elder care issues.

The Baltimore and Carroll County Offices of F&CS provide a comprehensive array of services to victims of domestic violence. Services include 24-hour hotline, individual and/or group counseling for women, children and men, support groups for battered women, referrals and assistance in obtaining financial help, shelter, day care, housing, food and legal services.

Weekly groups are held for batterers so they can learn non-violent methods of communication and stress reduction. Batterers may be self-referred, referred by partners, or court-ordered.

The mission of the Domestic Violence Program at Family and Children's Services is to assist victims of domestic violence and their children in maintaining their safety and providing a holistic approach to services that include the victims, child witnesses and abusers of domestic violence. F&CS offers a full range of services to families who have experienced domestic violence, including a 24-hour hotline, emergency shelter, legal advocacy through court accompaniment and referrals for legal consultation; case management; individual and group counseling for victims of domestic violence and their children; outreach with police accompaniment following 911 reports and to immigrant populations; abuser intervention services and anger management as a preventative tool for domestic violence. F&CS also works to increase community awareness by providing community education to the general public and targeted populations.

Description	FY 04	FY 05	FY 06	FY 07
Sheltered				
Women	12	15	18	14
Children	10	26	10	8
Men	0	0	0	0
Counseling				
Domestic Violence Victims	283	192	*82	*77
Unable to Shelter	86	17	15	12

*Part of FY 06 and most of FY 07 F&CS therapist positions were vacant. This is reflected in the low numbers of people served. However, many more victims were served in the entire program totaling 740.

Family Crisis Center

The Family Crisis Center of Baltimore County, Inc. (FCC) is a private non-profit organization founded nearly thirty years ago, with a mission to provide high quality services for people experiencing family conflict and domestic violence, and to provide education and consultation for the community at large, in an effort to prevent violence in families.

Over the past three decades, FCC has grown to become the most comprehensive family violence service agency in Baltimore County. Three hundred sixty-five days a year, the Center strives to fulfill its mission by providing a number of services including:

- A community-based FAMILY PSYCHOTHERAPY CLINIC, available to individuals, couples, children, and families.
- Baltimore County’s only on-site SAFE SHELTER for individuals fleeing their homes because of violence or the threat of violence.
- TRANSITIONAL HOUSING, allowing survivors additional time and support to reestablish themselves in the community.
- LEGAL SERVICES including direct legal representation for victims of domestic violence in both the Circuit and District Courts of Baltimore County primarily in: Peace/Protective Order hearings, Divorce, Child Custody and Support. FCC’s staff attorney also advises and guides pro se litigants, and provides referrals to other agencies or private attorneys.
- ADVOCACY SERVICES, including accompanying victims to court, extending outreach services through home visits to victims and facilitating survivor support groups
- NEW BEHAVIOR GROUPS, helping abusers learn new non-violent ways to recognize and handle stress and conflict within their families.
- FCC administers Baltimore County’s CRISIS HOTLINE, providing trained volunteers to respond to crisis calls twenty-four hours a day.

Family Crisis Center	2004	2005	FY 2006	FY 2007
Sheltered				
Women	184	150	256	152
Children	253	238	399	207
Men	8	5	8	3
Counseling				
Domestic Violence Victims	883	731	1,754	1,419
Unable to Shelter	39	43	91	71

House of Ruth



Legal representation is one of the greatest unmet needs confronting victims of domestic violence throughout Maryland. The House of Ruth Maryland – Marjorie Cook Domestic Violence Legal Clinic helps more than 3,000 victims of domestic violence obtain protective orders, peace orders, divorce decrees, custody of their children and child support each year. There are currently 15 attorneys plus paralegals and administrative staff throughout 6 offices in Maryland, including courthouse locations in Baltimore City, Hyattsville, Upper Marlboro and Montgomery County.

TurnAround, Inc.

TurnAround, Inc. provides a range of services for victims of sexual assault, domestic violence, and child sexual abuse. A private non-profit serving the Baltimore area since 1978, TurnAround provides all of its services at little or no cost to clients. Services include a highly skilled clinical department that helps children, adolescents, and adults heal from the devastating effects of violence. Clinicians offer individual and group counseling as well as on-site groups at local schools and service providers. TurnAround also helps ensure victim safety by providing a 24-hour hotline, emergency shelter to victims and crisis intervention counseling to survivors in local hospitals through the ER Program. In addition, TurnAround operates a Transitional Housing Program, formerly ACTS, Inc.’s program that helps domestic violence survivors gain independence and stability in their lives following abuse. TurnAround’s legal department assists victims to obtain protective orders and offers consultation for child custody and divorce cases. The Community Education and Training Department conducts presentations in local schools, community centers, and other non-profits that raise awareness about violence and teach participants how to end and prevent abuse.

TurnAround	2004	2005	2006	2007
Sheltered				
Women	41	47	27	52
Men	2	2	0	0
Children	34	53	31	65
Counseling				
Domestic Violence Victims	167	175	122	171
Unable to Shelter	49	92	94	86

G. Hospital Based Intervention

Domestic Violence – A Public Health Epidemic: Research shows that in addition to domestic violence being the leading cause of injuries to women, abused women experience 60% overall higher health problems. Victims of domestic violence are seen in health care settings more often than shelters and legal settings. Hospitals provide a safe 24/7 setting for victims of domestic violence to receive help.

Northwest Hospital Center: Currently, Northwest Hospital Center has Baltimore County's only formal hospital-based Domestic Violence Program. Established in late 2004, the program assures 24/7 crisis counseling, lethality assessment and safety planning to all victims, through program staff and TurnAround, Inc.'s ER Companion Program. Working closely with Baltimore County Police Domestic Violence Coordinators, the State's Attorney's Office, The Women's Law Center, the Court Advocate Program at the Department of Social Services and the local domestic violence services, follow-up services are provided to ensure safety, legal assistance and counseling services for victims and their children.

Year	# Of Victims Served	# Of Staff Trained
2004	24	Approx. 124
2005	51	278
2006	137	356
2007	145	810

Statistics generated by Northwest Hospital's program show the progression of a hospital-based program's growth. During the majority of 2004, there was no formal program, however, TurnAround's ER Companions responded to calls, and there was some training provided. As the program has grown, and staff received greater training, the increase in the number of victims identified increased. It is anticipated that the victims served will increase again in 2007.

Domestic Violence Referral Programs

A. Abuser Intervention Program (AIP)

The Abuser Intervention Program (AIP) is designed to help offenders stop using violence and other control tactics in their intimate partner relationships. The goal is to teach effective non-violent skills and show respect for one’s partner. The purpose of the AIP is to aid the criminal justice system in holding the offender accountable for his/her actions and promote safety for victims. The court orders offenders to the Domestic Violence Referral Program for placement into a state certified Abuser Intervention Program.

B. Healthy Relationships Program (HRP)

The Healthy Relationships Program is a short-term education and information program created to address the needs of first time offenders of domestic violence. The District Court of Baltimore County orders defendants to the Domestic Violence Referral program for placement in a group at Family Crisis Center, Family and Children’s Services, or TurnAround, Inc. Defendants must be first time offenders who did not use a weapon or cause serious injury to the victim.

Program Referrals

Abuser Intervention Program	FY2005	FY2006	FY2007
Baltimore County Circuit Court	108	66	69
Baltimore County District Courts	125	160	187
Other Jurisdictions	9	18	19
Total	242	244	275

Healthy Relationships Program	FY 2005	FY 2006	FY2007
Baltimore County District Court	146	185	223

The referrals to the Abuser Intervention Program increased 1% between FY2005 to FY2006. Program referrals continued to increase 13% in FY2007.

The referrals to Healthy Relationships Program increased 27% between FY2005 to FY2006. Program referrals continued to increase by 21% in FY2007.

Total referrals to the Domestic Violence referral program increased 11% between FY2005 to FY2006. Program referrals showed an increase of 16% in FY2007.

Program Completion Status Report

Program	Satisfactory Termination	Unsatisfactory Termination
Abuser Intervention Program	59	73
Healthy Relationships Program	149	67
Totals	208	140

This chart indicates that of the 348 completion reports received by the Domestic Violence Referral Program during FY2007, 60% of the clients satisfactorily completed the program while 40% failed to complete the court-ordered domestic violence intervention programs.

Highlights

- The First Annual Domestic Violence Conference providing resources and education to the community was held on September 28, 2007
- The Domestic Violence Fatality Review Team has been convened, developed protocols for operating, and is awaiting legal review to commence.
- The partnership between the Baltimore County Service Providers, the Department of Social Services and the Police Department was strengthened resulting in 1,838 home visits to victims of domestic violence providing information, resources and referral for counseling.
- The domestic violence community participated in the annual Homeless Rally on March 5, 2007 representing the many victims who are homeless as a result of violence in their home.
- To strengthen communication within the Baltimore County Domestic Violence community, a newsletter was launched reaching more than 70 individuals and organizations.

State Legislative Initiatives

MNADV PRIORITY LEGISLATION

HB 427 /SB 199 **Family Law – Protective Orders – Duration of Final Order**
(Delegate Kathleen Dumais and Senator Jennie Forehand)

Would extend the length of time that a court can order a Civil Order of Protection from a maximum of 18 months to 24 months. This change would afford additional safety for victims of domestic violence and their children, reduce the number of times victims must return to court to maintain protection, and reduce court time for additional hearings.

*Hearing on SB 199 held on Tuesday, February 6, 2007 at 1:00 pm in Senate Judicial Proceedings Committee. **SB 199 passed third reading in Senate, 47-0, on 2/23/07.** Hearing on HB 427 held on Thursday, February 15 at 1:00 pm in the House Judiciary Committee. **HB 427 received an unfavorable report in House Judiciary Committee, 3/5/07.** Hearing on SB 199 in House Judiciary Committee on Thursday, March 29, at 1:00 pm. **SB 199 received an unfavorable report in House Judiciary Committee, 4/2/07.***

HB 415 /SB 505 **Family Law – Protective Orders – Burden of Persuasion**
(Delegate Kathleen Dumais and Senator Jennie Forehand)

Would modify the standard of proof in a final Civil Order of Protection (COP) from the current standard of “clear and convincing evidence” to “a preponderance of the evidence.” The majority of civil actions in Maryland, including matters related to families, require proof by a preponderance of the evidence.” The current standard for a COP is higher than the traditional civil standard. The standard of proof required for Civil Orders of Protection should be consistent with this traditional civil standard and with that of other family matters.

*Hearing on HB 415 held on Thursday, February 15 at 1:00 pm in the House Judiciary Committee. **Unfavorable report in House Judiciary Committee, 3/5/07.** Hearing on SB 505 held on Thursday, February 28 at 1:00 pm in the Senate Judicial Proceedings Committee. **Unfavorable report in Senate Judicial Proceedings Committee, 3/13/07.***

HB 446 /SB 607 **Real Property – Wrongful Detainer – Protective Orders**
(Delegate Kathleen Dumais and Senator Jennie Forehand)

This bill would clarify that, under the domestic violence protective order statute, the court can order the abuser to leave the home even if the home is titled in the abuser’s name only and the victim’s name is not on the title to the property.

*Hearing on HB446 held on Thursday, February 15 at 1:00 pm in the House Judiciary Committee. **No House Action.** Hearing on SB 6a07 held on Thursday, February 28 at 1:00 pm in the Senate Judicial Proceedings Committee. **No Senate Action.***

Key Organizations

Adelante Familia
3734 Eastern Ave.
Baltimore, MD 21231

Baltimore / Carroll Co. Sexual Assault
Domestic Violence Hotline
9101 Wise Avenue extended
Baltimore, MD 21219

Baltimore County Department of
Social Services
Drumcastle Government Center
6401 York Road
Baltimore, MD 21212

Baltimore County Police Department
Family Crisis Division
6401 York Road
Baltimore, MD 21212

Baltimore County Sheriff Department
County Courts Building
401 Bosley Avenue
Towson, MD 21204

Baltimore County States Attorney's Office
401 Bosley Avenue
Towson, Maryland 21204

Chana
Associate Kreiger Building
101 West Mt. Royal Avenue
Baltimore, MD 21201

Division of Parole / Probation
8914 Kelso Drive
Baltimore, MD 21221

Family & Children's Services
3104 Lord Baltimore Drive
Suite 206
Baltimore, MD 21244

Family Crisis Center
P. O. Box 3909
Baltimore, MD 21222

Family Services
Circuit Court for Baltimore County
401 Bosley Avenue
Towson, MD 21204

Domestic Violence Program
Northwest Hospital
5401 Old Court Road
Randallstown, MD 21133

Jewish Family Services
6 Park Center Ct.
Suite 211
Owings Mills, MD 21117

Legal Aid Bureau
29 West Susquehanna Avenue
Suite 305
Towson, MD 21204

La Programa Adelante
St. Clements Parrish
2700 Washington Avenue
Lansdowne, MD 21227

MAAR, Inc.
P.O. Box 32
Riderwood, MD 21139

TurnAround Inc.
401 Washington Avenue
Suite 300
Towson, MD 21204

Women's Law Center of Maryland
305 West Chesapeake Avenue
Suite 201
Towson, MD 21204

Women's Law Center of Maryland
POARP
County Court House
401 Bosley Avenue room 101
Towson, MD 21204